

Case study

New Border Control Point, Killingholme

Construction of a border control facility for inspecting goods entering and leaving the UK, featuring offices, cold storage rooms and a service yard for truck parking.

The ground investigation revealed soft layer of peat at a depth of about 4.0m which precluded traditional foundations. The site was previously occupied by a cooling tower, but it was unclear if the remnant of its concrete base was removed. Alan Wood & Partners engaged with the site team to probe drill to locate this and adjust the foundation layout to avoid the obstruction.

Alan Wood & Partners were appointed to carry out the Civil and Structural design of the facility including geotechnical and geo-environmental investigation to inform the design of the substructure and any requirements for remediation. The superstructure for the goods checking and holding areas comprised a steel portalised frame supported on piled foundation. Due to time constraint, the office building adopted a simple single storey steel structure sat on a raise concrete slab supported on precast concrete retaining structure built off piled foundation.



Location:
Lincolnshire



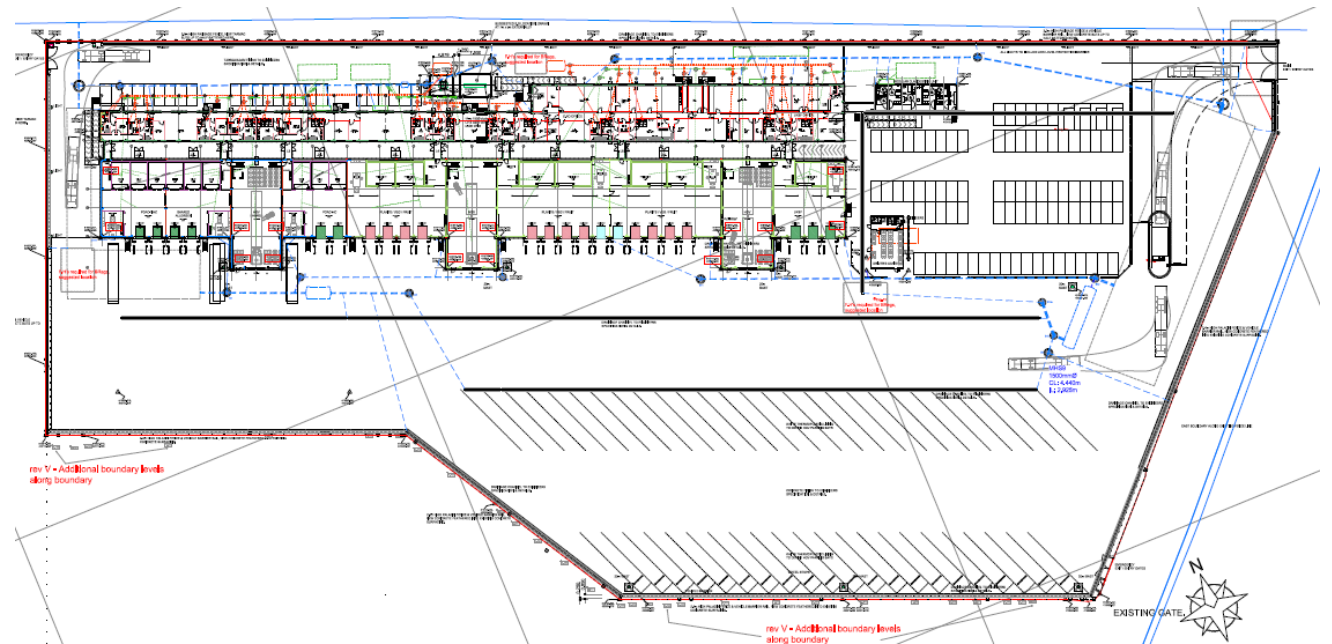
Client:
CRO Ports/Tolent
Construction Limited



Architect:
PCP Architects



Value:
£4.5m



Civil Engineering Structural Engineering Geotechnical and Geoenvironmental

Engineer/
Manage/
Deliver/