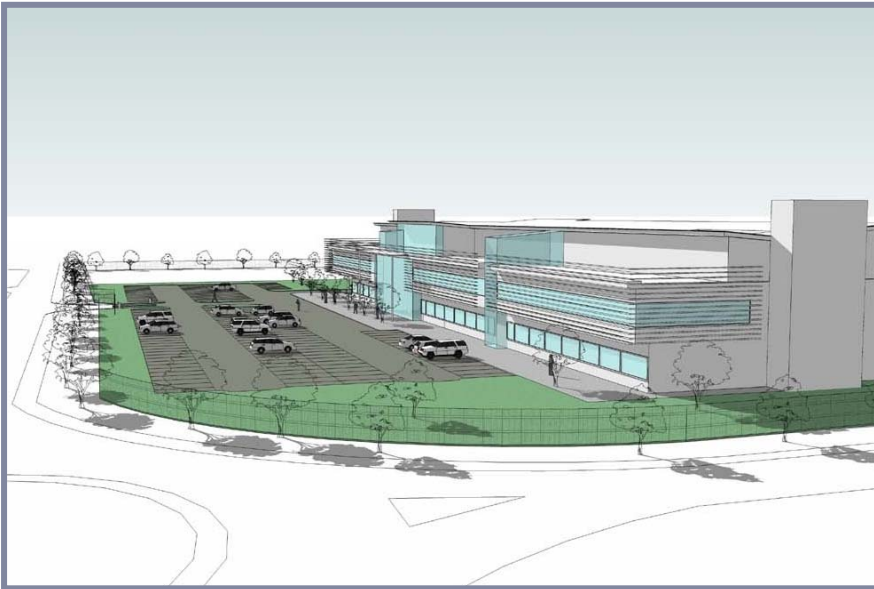


Scientific Support Unit - Wakefield



Project:

Scientific Support Unit, West Yorkshire Police

Location:

Wakefield

Client:

West Yorkshire Police Authority

Consulting Engineer:

Alan Wood & Partners

Architect:

Rance, Booth & Smith

Project Manager:

Turner & Townsend

Project Value:

£31 million

Description:

West Yorkshire Police require a new flagship building to house their Scientific Support Unit.

This will contain their principal forensic departments, including Fingerprints Development Laboratory, Imaging Unit and Intelligence. Sustainability, energy efficiency and future proofing were key objectives of the scheme. The building is heavily serviced with an highly complex IT network.

The proposed 7,300sqm building is to comprise a three storey reinforced concrete flat slab structure founded on piles. Alan Wood & Partners were commissioned to provide full structural and underground drainage services.

Engineering challenges included a site with over two metres of variable fill, long structural spans and complex architectural facades.

